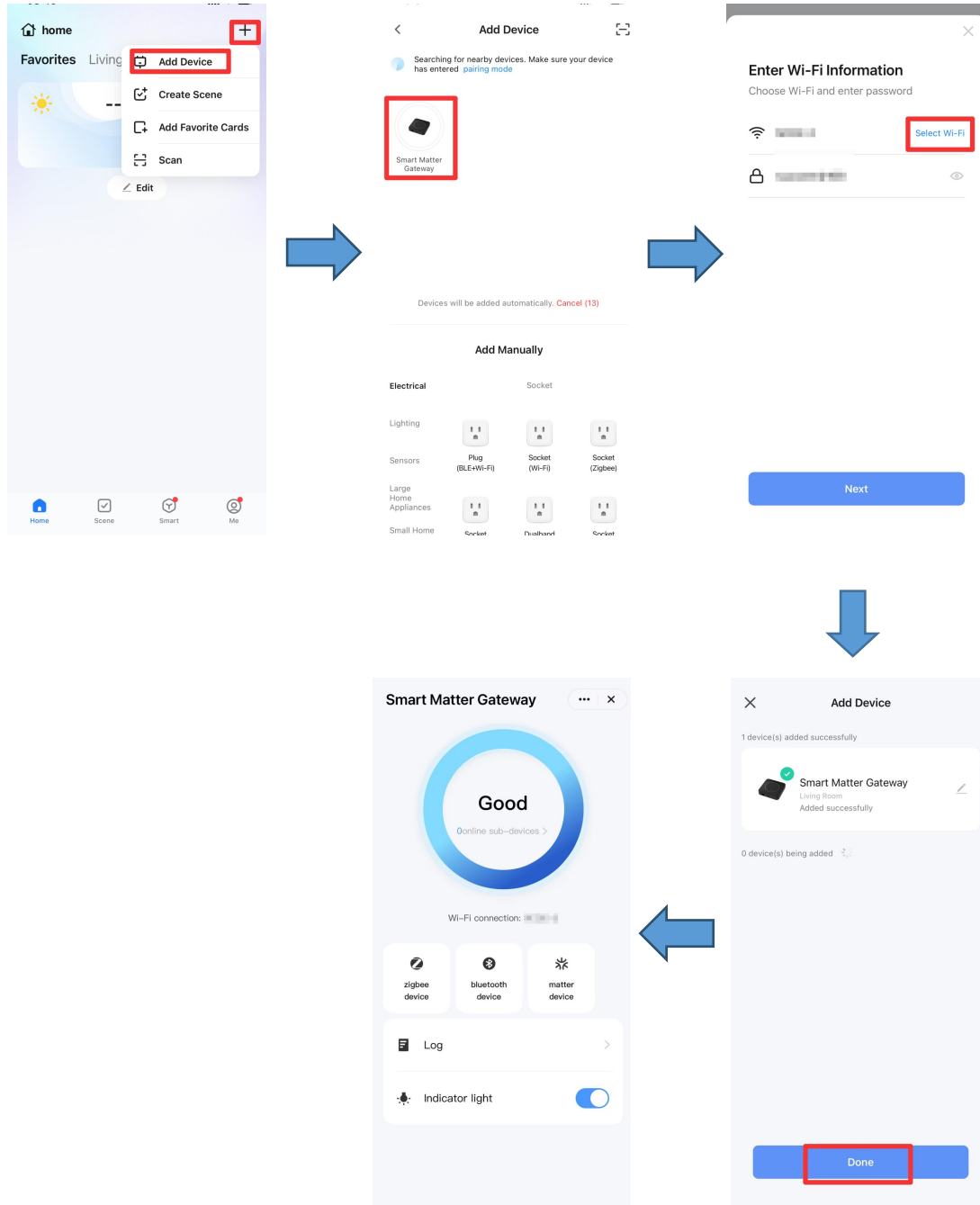


Wireless-matter-Thread

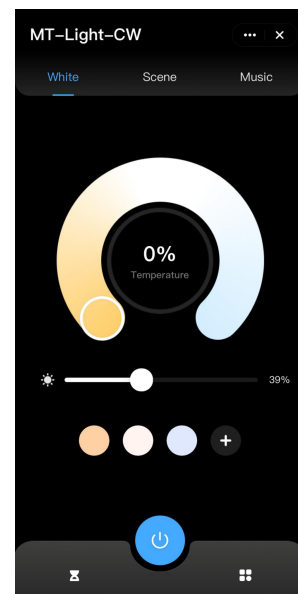
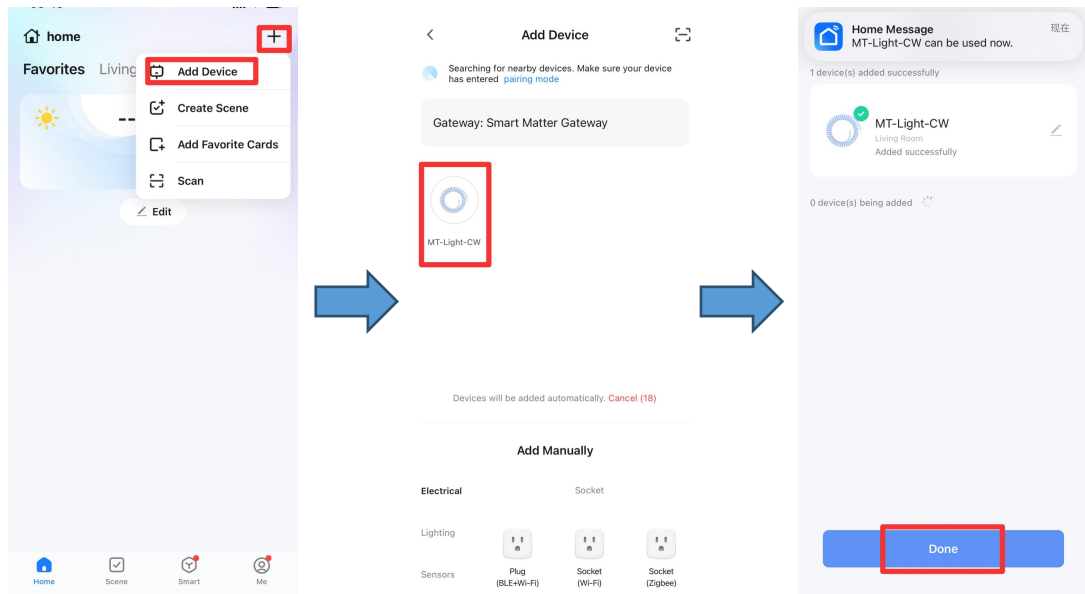
1. Add gateway:

- (1) 'Add Driver' -> 'Reset the gateway and wait for the connection' -> 'Click the gateway icon' -> 'Select Wi-Fi' or Enter the Wi-Fi password and account -> 'Next' -> 'Done'



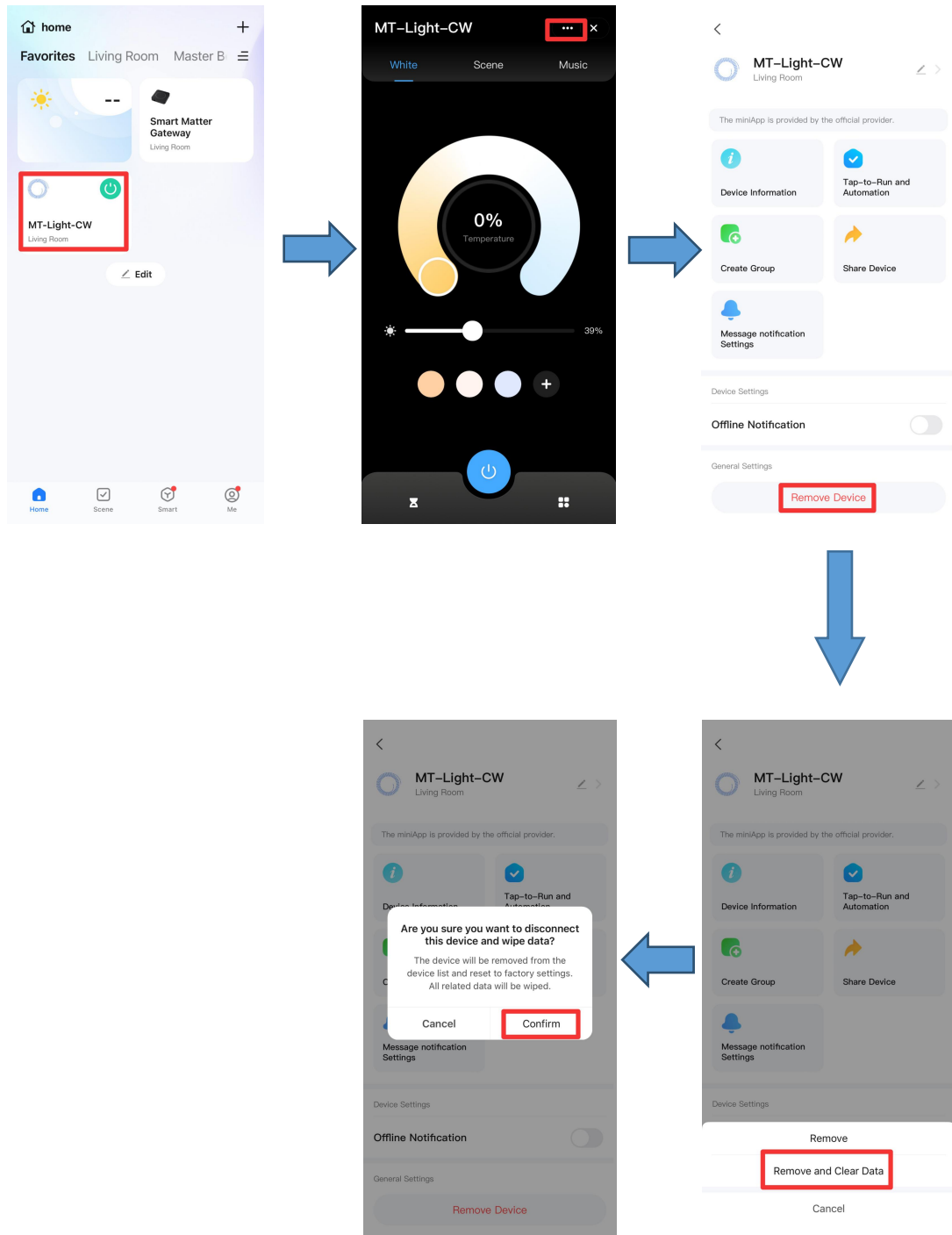
2. Add device:

- (1) 'Add Driver' -> Press the knob (or PUSH switch) six times or press the reset button to make the LED driver enter the network configuration -> Click LED Driver icon ->'Done'



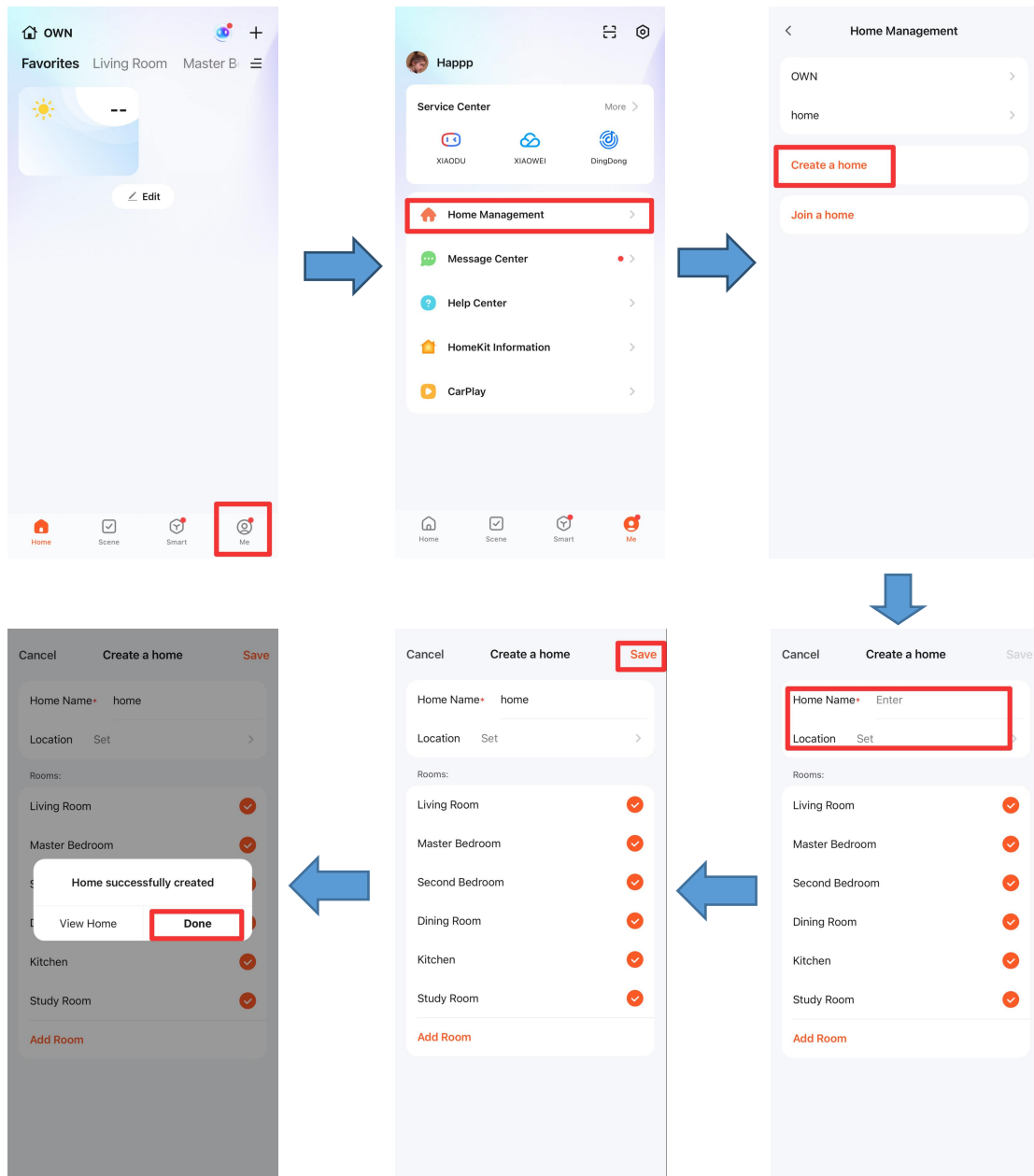
3. Remove the Device:

(1) 'Click the icon' -> '...' -> 'Remove Device' -> 'Remove and clear Data' -> 'Confirm'



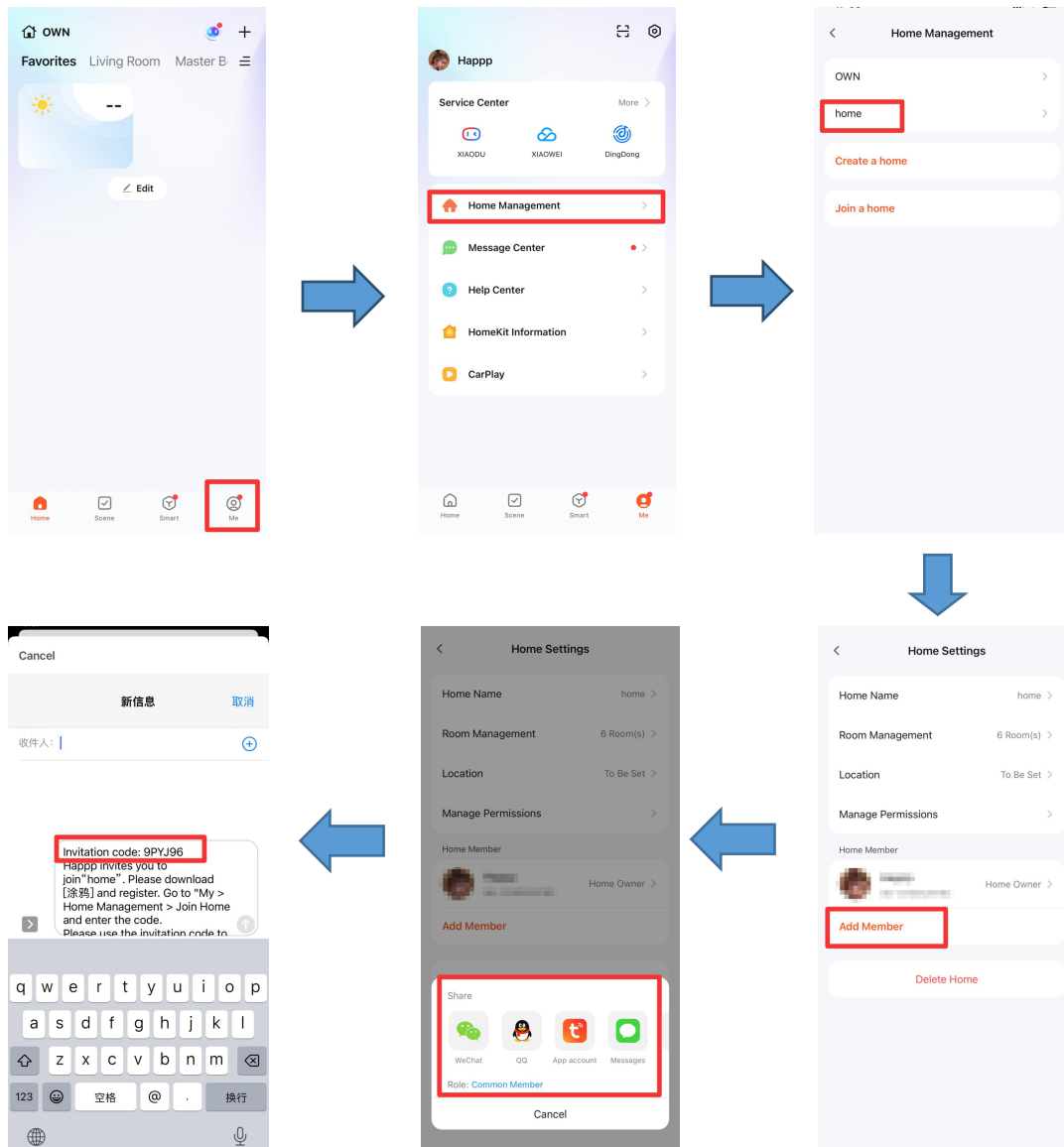
4. Create a home

(1) 'Click the 'Me' -> 'Home Management'' ->'Create a home' -> 'Fill in the name and location, and you can also choose the type of room' -> 'save' -> 'Done'



5. Invite users into the home you have created and join a home

(1) 'Click the 'Me' -> 'Home Management' -> 'home' -> 'Add Member' -> Select the sharing method. Below is the option for message.



(2) The setting of the invited: 'Click the 'Me' -> 'Home Management' ->'Join a home' -> write the invitation code ->Enter '→'

